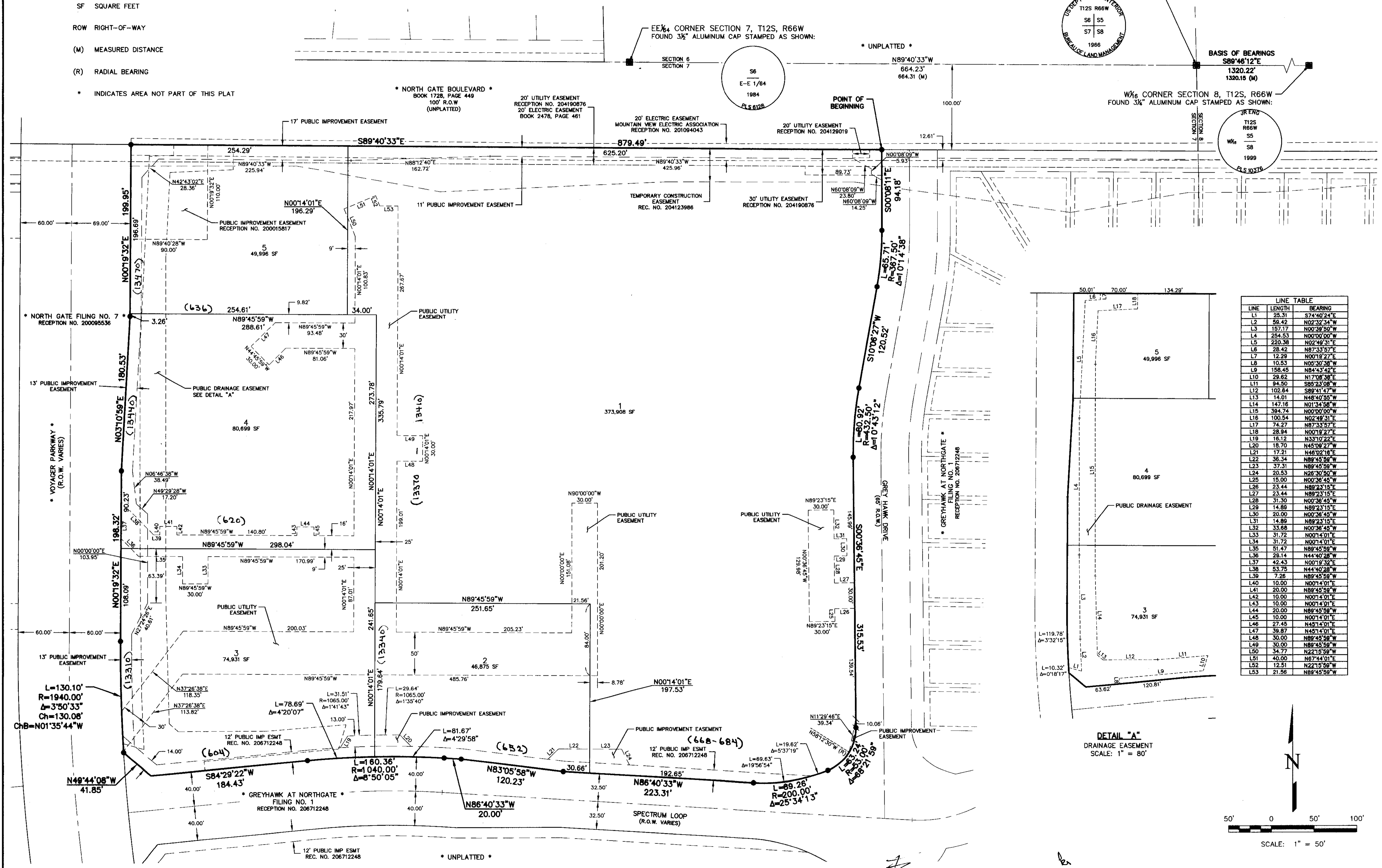


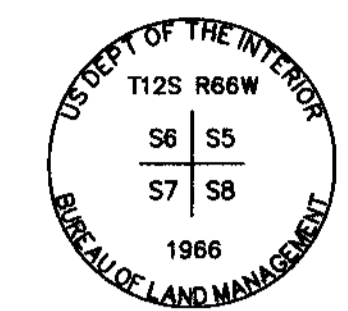
NORTHGATE PLAZA FINAL PLAT

LEGEND:

- SET NO. 5 REBAR WITH 1" ORANGE PLASTIC CAP STAMPED "EDWARD-JAMES PLS 17502"
- FOUND MONUMENT MARKED AS SHOWN
- SF SQUARE FEET
- ROW RIGHT-OF-WAY
- (M) MEASURED DISTANCE
- (R) RADIAL BEARING
- * INDICATES AREA NOT PART OF THIS PLAT

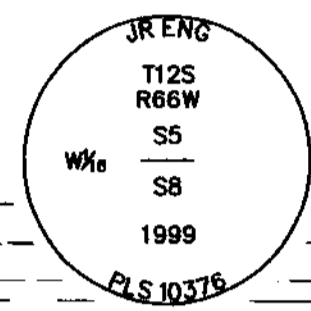


NW CORNER SECTION 8, T12S, R66W
FOUND 3/4" BRASS CAP STAMPED AS SHOWN:



BASIS OF BEARINGS
S89°46'12"E
1320.22'
1320.15 (M)

W 1/6 CORNER SECTION 8, T12S, R66W
FOUND 3/4" ALUMINUM CAP STAMPED AS SHOWN:



LINE TABLE

LINE	LENGTH	BEARING
L1	25.31	S74°40'24"E
L2	59.42	N02°32'34"W
L3	157.17	N00°38'50"W
L4	254.53	N00°00'00"W
L5	220.36	N02°49'31"E
L6	28.42	N87°33'57"E
L7	12.29	N00°18'27"E
L8	10.53	N05°30'38"W
L9	158.45	N84°43'42"E
L10	29.62	N17°08'38"E
L11	94.50	S85°23'08"W
L12	102.64	S89°41'47"W
L13	14.01	N48°40'55"W
L14	147.16	N01°34'58"W
L15	394.74	N00°00'00"W
L16	100.54	N02°49'31"E
L17	74.27	N87°33'57"E
L18	28.94	N00°18'27"E
L19	16.12	N33°10'22"E
L20	18.70	N45°08'27"W
L21	17.21	N48°02'16"E
L22	36.34	N89°45'59"W
L23	37.31	N89°45'59"W
L24	20.53	N23°30'50"W
L25	15.00	N00°36'45"W
L26	23.44	N88°23'15"E
L27	23.44	N88°23'15"E
L28	31.30	N00°36'45"W
L29	14.89	N89°23'15"E
L30	20.00	N00°36'45"W
L31	14.89	N89°23'15"E
L32	33.68	N00°36'45"W
L33	31.72	N00°14'01"E
L34	31.72	N00°14'01"E
L35	51.47	N89°45'59"W
L36	28.14	N44°40'28"W
L37	42.43	N00°19'32"E
L38	53.75	N44°40'28"W
L39	7.26	N89°45'59"W
L40	10.00	N00°14'01"E
L41	20.00	N89°45'59"W
L42	10.00	N00°14'01"E
L43	10.00	N00°14'01"E
L44	20.00	N89°45'59"W
L45	10.00	N00°14'01"E
L46	27.45	N45°14'01"E
L47	39.87	N45°14'01"E
L48	30.00	N89°45'59"W
L49	30.00	N89°45'59"W
L50	34.77	N22°15'59"W
L51	40.00	N67°44'01"E
L52	12.51	N22°15'59"W
L53	21.56	N89°45'59"W

DETAIL "A"
DRAINAGE EASEMENT
SCALE: 1" = 80'



SCALE: 1" = 50'

REVISIONS	NO.	DESCRIPTION	DATE
	1	REVISED PER CITY COMMENTS	1-28-07
	2	ADDITIONAL PUBLIC IMPROVEMENT EASEMENTS	2-22-07
	3	REVISE LOTS	3-01-07
	4	ADD PUBLIC UTILITY EASEMENTS	3-28-07

EDWARD-JAMES SURVEYING, INC.
2764 JANITELL ROAD
COLORADO SPRINGS, COLORADO 80906
PHONE: (719) 576-1216 FAX: (719) 576-1206



**NORTHGATE PLAZA
FINAL PLAT**
A PORTION OF THE NORTHEAST QUARTER OF SECTION 7,
TOWNSHIP 12 SOUTH, RANGE 66 WEST OF THE 6TH P.M.
CITY OF COLORADO SPRINGS, COUNTY OF EL PASO, STATE OF COLORADO

DRAWN BY	RJS
CHECKED BY	PJH/JLS
H-SCALE	1" = 50'
JOB NO.	631.00
DATE CREATED	12/01/06
DATE ISSUED	03/28/07
SHEET NO.	2 OF 2

N:\ES\Projects\Current\0631_Northgate Plaza\PLAT_P2.dwg, 3/28/2007 1:30:24 PM